

By using ArchDaily, you agree to our [Terms of Use](#), [Privacy Policy](#) and [Cookie Policy](#).

## Residential & Commercial Building Renovation / Dannien Roller Architekten + Partner



Curated by **Paula Pintos**

[Share](#)

**OFFICES INTERIORS, EXTENSION • TÜBINGEN, GERMANY**



Home



Projects



Products



Folders



Feed

By using ArchDaily, you agree to our [Terms of Use](#), [Privacy Policy](#) and [Cookie Policy](#).

Photographs: [Dietmar Strauß](#)

Manufacturers: [Louis Poulsen](#), [Artemide](#), [Barthelme](#), [Cassina](#), [FSB](#), [LIVOS](#), [Sto](#), [VitrA](#), [Zehnder](#),  
Fliesen Kemmler, Forbo Flooring, Screed, Sinnotec, Stelrad, Tolomeo, zeg wall paneling

Lead Architects: Dipl.-Ing. Maren Dannien, Dipl.-Ing. Matthias Roller

Products used in this Project

#### LIGHTS



Louis Poulsen  
Lamps - AJ Collection

[MORE SPECS](#)

By using ArchDaily, you agree to our [Terms of Use](#), [Privacy Policy](#) and [Cookie Policy](#).



*Text description provided by the architects.* The neo-classical building conversion and extension blend into the historical context of the old town while retaining the autonomy of style.



By using ArchDaily, you agree to our [Terms of Use](#), [Privacy Policy](#) and [Cookie Policy](#).





By using ArchDaily, you agree to our [Terms of Use](#), [Privacy Policy](#) and [Cookie Policy](#).



By using ArchDaily, you agree to our [Terms of Use](#), [Privacy Policy](#) and [Cookie Policy](#).



Home



Projects



Products



Folders



Feed

By using ArchDaily, you agree to our [Terms of Use](#), [Privacy Policy](#) and [Cookie Policy](#).



The green roofscape contrasts with the sculptural building structure, respectfully embedded into the terraced slope of Schulberg.



By using ArchDaily, you agree to our [Terms of Use](#), [Privacy Policy](#) and [Cookie Policy](#).



## Project gallery



Home



Projects



Products



Folders



Feed

By using ArchDaily, you agree to our [Terms of Use](#), [Privacy Policy](#) and [Cookie Policy](#).



  
Home

  
Projects

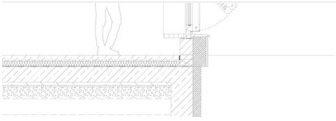
  
Products

  
Folders

  
Feed



By using ArchDaily, you agree to our [Terms of Use](#), [Privacy Policy](#) and [Cookie Policy](#).




## Project location

**Address:** Pflegelhofstraße 4.1, 72070 Tübingen, Germany



Location to be used only as a reference. It could indicate city/country but not exact address.

 Share

About this office



**Dannien Roller Architekten + Partner**

Office

**FOLLOW**



Home



Projects



Products



Folders



Feed



---

By using ArchDaily, you agree to our [Terms of Use](#), [Privacy Policy](#) and [Cookie Policy](#).

---

Published on May 05, 2021

