



Submit
Subscribe
Share



Sofie Haug Children's Day-Care Centre | Dannien Roller Architekten + Partner

Contemporary emulation in mystic woodland sanctum for children New building for
3-group Sofie Haug Children's Day-Care Centre in Tübingen



Architecture Design

☆ Favorite 👁 3,361

Release Time: February 27, 2023

版权声明：本链接内容均系版权方发布，版权属于Dannien Roller Architekten + Partner，编辑版本版权属于设计宇宙designverse，未经授权许可不得复制转载此链接内容。欢迎转发此链接。

Copyright Notice: The content of this link is released by the copyright owner [Dannien Roller Architekten + Partner](#). designverse owns the copyright of editing. Please do not reproduce the content of this link without authorization. Welcome to share this link.

Designed by Dannien Roller Architekten + Partner for the city of Tübingen, the Sofie Haug opened on the city's Rosenauer Weg in 2022.

With a walkout basement set into a slope, the two-storey hybrid-timber building forms an architectural focal point which pays almost perfect homage to the ambitiously modelled terrain while ensuring the mature tree population is retained. The building's rotation creates a forecourt as a transition area leading to the day-care centre's protected grounds.



© Dietmar Strauss



© Dietmar Strauss

The rear-ventilated façade of charred spruce interacting with bright, glazed teal spruce to form a rhythmic pattern achieves an enchantingly mystic effect, arousing curiosity not only in children. Elemental and earthbound in its consolidation of the special charms its surroundings offer, this woodland sanctum invites visitors to explore its mystery via the glazed main entrance. Set at an angle within the façade, it is framed by glazed spruce with a highly intense teal colour that evokes mountain and forest lakes.



The southern garden side featuring the group rooms includes an access balcony structure, which contrasts with the predominantly enclosed north side. This creates a distinctive grid in front of the façade with floor-to-ceiling openings. Dark steel columns resemble a second skin owing to their filigree grouping. The zone between the building and the outside world provides a space for both privacy and social interaction. When the sun shade is extended, two hot-dip galvanised steel staircases lead to the open air in the varied play and activity area in the garden.



© Dietmar Strauss



© Dietmar Strauss



© Dietmar Strauss



© Dietmar Strauss

The interaction between traditional wood and cool steel produces a dynamism, rooted in the idea that the day-care centre is designed to be an inspiring workshop for children's creativity.

The east side is charged with tension with its glazed walkout basement nestled in the hillside. The building rises above the slope, seemingly weightless. Reflections in the glass and the supporting structure showing through like a stylised root system allow architecture and nature to interconnect.





© Dietmar Strauss

The building's spatial layout is well-defined and uncluttered, adapted to the children's need for structure. A wide central corridor provides access on both the ground and upper floors. The north side houses the service rooms as well as the staircase and exposed concrete lift shaft in the centre while the recreation rooms are located to the south with direct access to the outside.



© Dietmar Strauss



designverse
设计宇宙

© Dietmar Strauss



designverse
设计宇宙

© Dietmar Strauss



designverse
设计宇宙

© Dietmar Strauss



© Dietmar Strauss

The centre's management office and the kitchen are positioned next to the multifunctional foyer. The crèche rooms are located in the building's eastern section.

The forest and nature theme continues inside. The complex communication system between materials and colours resembles a bright forest clearing. Walls of light-coloured spruce seem to grow out of the dark-brown, structured, earthy rubber floor. The ceilings covered with light blue wood wool panels bring the sky into the building's rooms. The radiant sulphur-yellow paint on the oak doors symbolises the sun and wild forest flowers.



© Dietmar Strauss



© Dietmar Strauss



© Dietmar Strauss

Interlacing of materials in the staircase, where the grey exposed concrete of the lift shaft meets light spruce wood and raw black steel, create a composition full of tension. Complex colours, shapes and structures encourage children's enjoyment of visual and haptic perceptions. Large glazed surfaces and floor-to-ceiling windows with embedded seats bring nature into the rooms and invite children to linger.





© Dictmar Strauss



© Dictmar Strauss



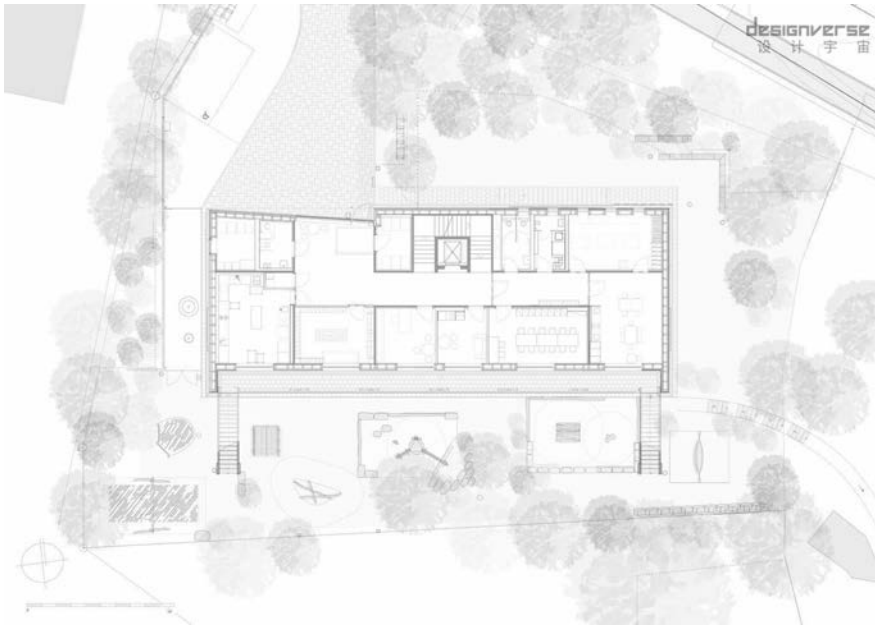
© Dietmar Strauss

The interior and exterior seem to melt into one another in the walkout basement. The exposed concrete walls implanted into the slope enfold the movement space. This dialogue and the polarity of materials result in an atmospheric spatial experience.

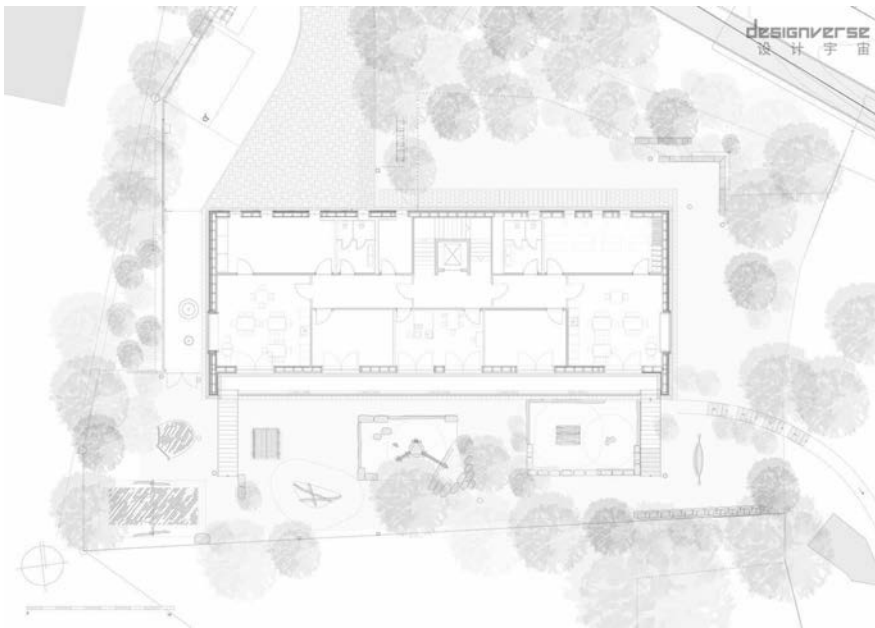
Modern aesthetic design language combined with natural materials and dominant colour contrasts create an imaginative venue that fulfils children's desire for narrative architecture.



Site Plan ©Dannien Roller Architekten + Partner



Ground Floor ©Dannien Roller Architekten + Partner



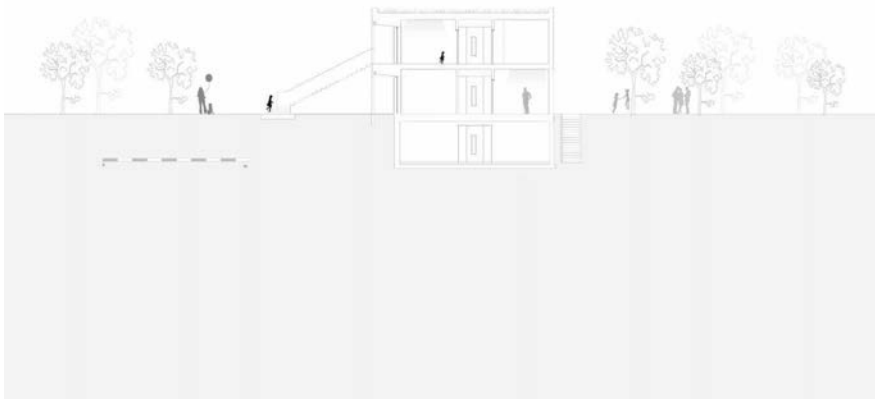
First Floor ©Dannien Roller Architekten + Partner



Basement Floor ©Dannien Roller Architekten + Partner



Section ©Dannien Roller Architekten + Partner



Section ©Dannien Roller Architekten + Partner

标签

Architecture Design # 教育建筑

About author



Dannien Roller Architekten + Partner

Germany

Architecture Design

Comment

Comment after login

Cancel

Confirm

Case recommendation

[More\(4727\)](#)



Multifunctional Cultural Center | Kerimov Architects



Kerimov Architects

Release time: 2023/03/20

Architecture Design



Casa do Cabo. Villa in Portugal | Kerimov Architects



Kerimov Architects

Release time: 2023/03/20

Architecture Design

Residential architecture

Disclaimer: Some pictures and articles are from the Internet, and the copyright belongs to original authors. If any discrepancy with the copyright, please contact us.

[About us](#)

[Contact us](#)

[Privacy policy](#)

TELEPHONE & FAX +86 021 6258 5617 +86 021 6258 5617-102

E-MAIL competition@youngbird.com.cn

沪ICP备16034585号-3 | ©2016-2022 designverse Copyright 营业执照

